



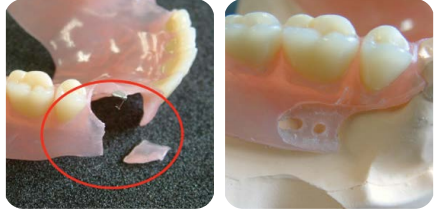
CLASP REPAIR INSTRUCTIONS

WITH Premade Clasps AND **TURBOfix**



PREPARING THE DENTURE:

- Shave the area of repair on the body of denture. Create a fixing point and drill retention
- Holes in the area of repair. Sand blast the AcryFlex Pre-made Clasp to ensure
- Mechanical retention.



PREPARING THE CLASP:

- Heat the clasp with the heat gun for 20 to 30 seconds. The clasp is ready for shaping when the clasp arm feels warm.
- Keep the clasp in the center of the ring.



ATTACHING THE CLASP:

- Only apply resin separator on the stone that will come into contact with the denture.
- Use a self-cure repair resin such as TurboFix or a cold-cure repair resin to attach the clasp onto the repair area.
- Press the clasp onto the model and shape as necessary.



RE-SHAPING AND POLISHING:

- Re-adjust the retention of the clasps with the heat gun again for better fit. Grind the inner curve or tips of the clasp to achieve the ideal size.
- Polish as normal.



AVOID CONTACT WITH WATER AT 70°C (158°F) OR HIGHER. It may become fragile, causing cracks and chips. When cleaning with a steam cleaner, make sure the nozzle is at least two inches away from the denture. Do not polish with an automatic polishing machine as it can run at temperatures higher than 70°C. Do not sterilize our resins in an AUTOCLAVE. DO NOT USE SOLUTIONS WITH 60% OR HIGHER ALCOHOL CONTENT. It will bleach the denture's surface. You may use sterilizing alcohol with less than 60% concentration.



1-888-793-7477



INFO@SNOWROCKUSA.COM



WWW.SNOWROCKUSA.COM